

PMP POWERWORKS APS

SMART HOUSE





SPACE CAPSULE HOUSE
E5



SPACE CAPSULE HOUSE
E7



SPACE CAPSULE HOUSE
APPLE CAPSULE



SPACE CAPSULE HOUSE
O5



SPACE CAPSULE HOUSE
J20



SPACE CAPSULE HOUSE
QQ

PMP POWERWORKS APS

Space Capsule House - E5



Product number : Space Capsule House E5

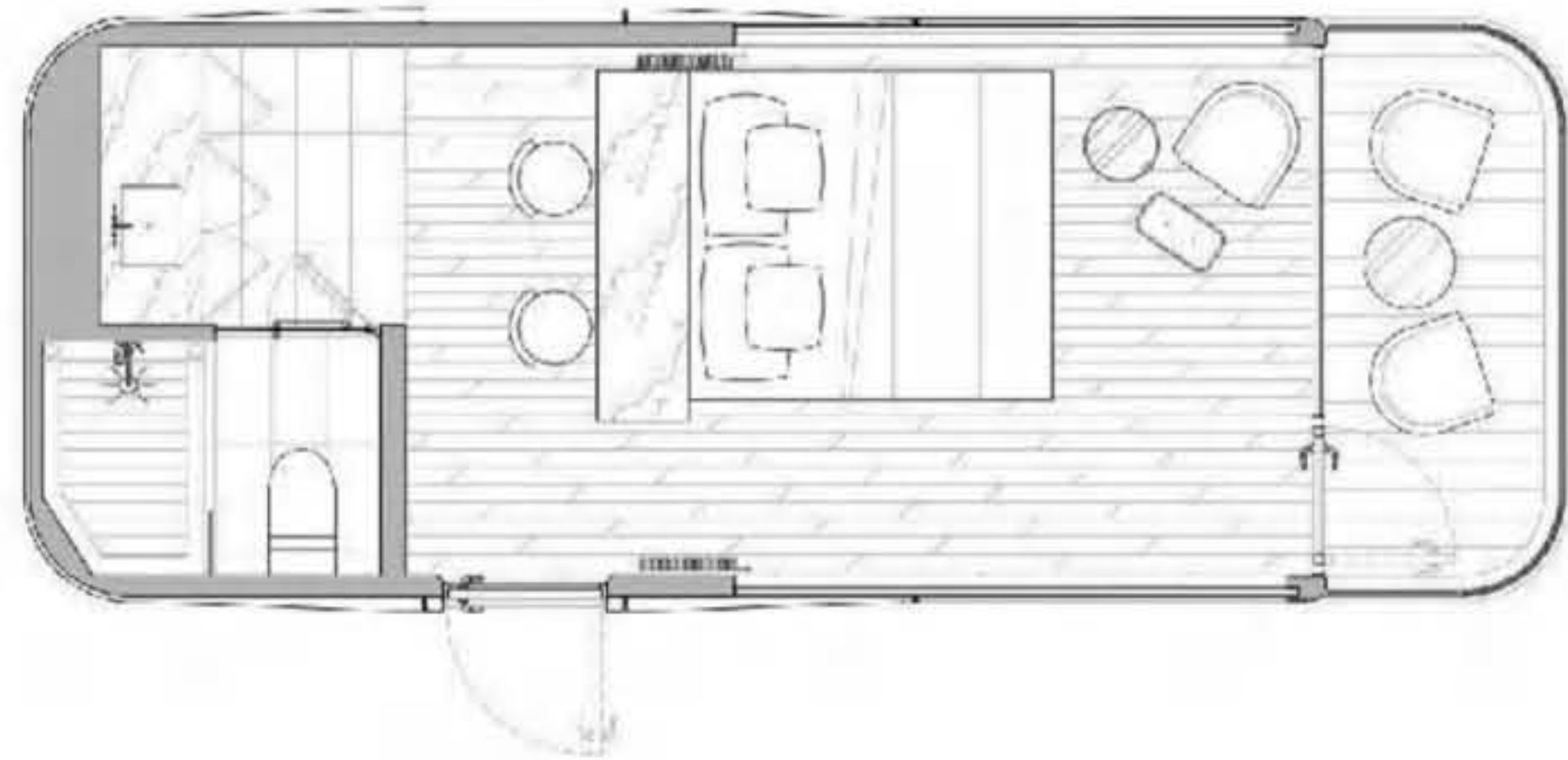
Dimensions : L8500 x W3300 x H3200 mm

land area : 28.05 m²

Maximum occupant : 2 people

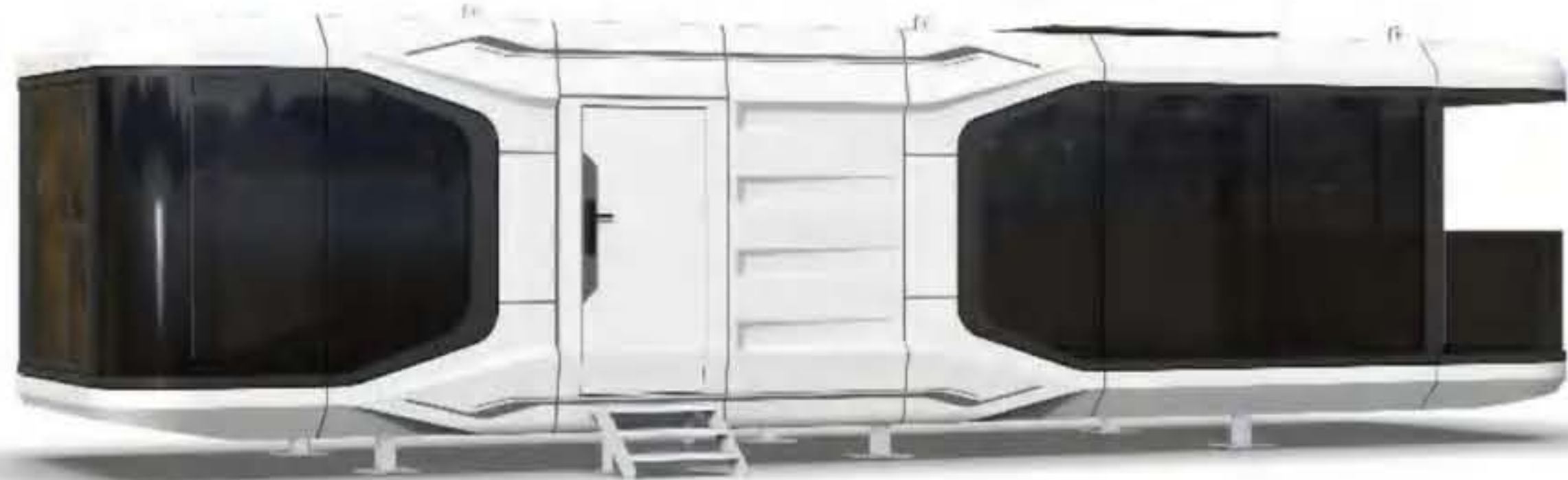
Power consumption : 8 KW

Total net weight : 9 tons

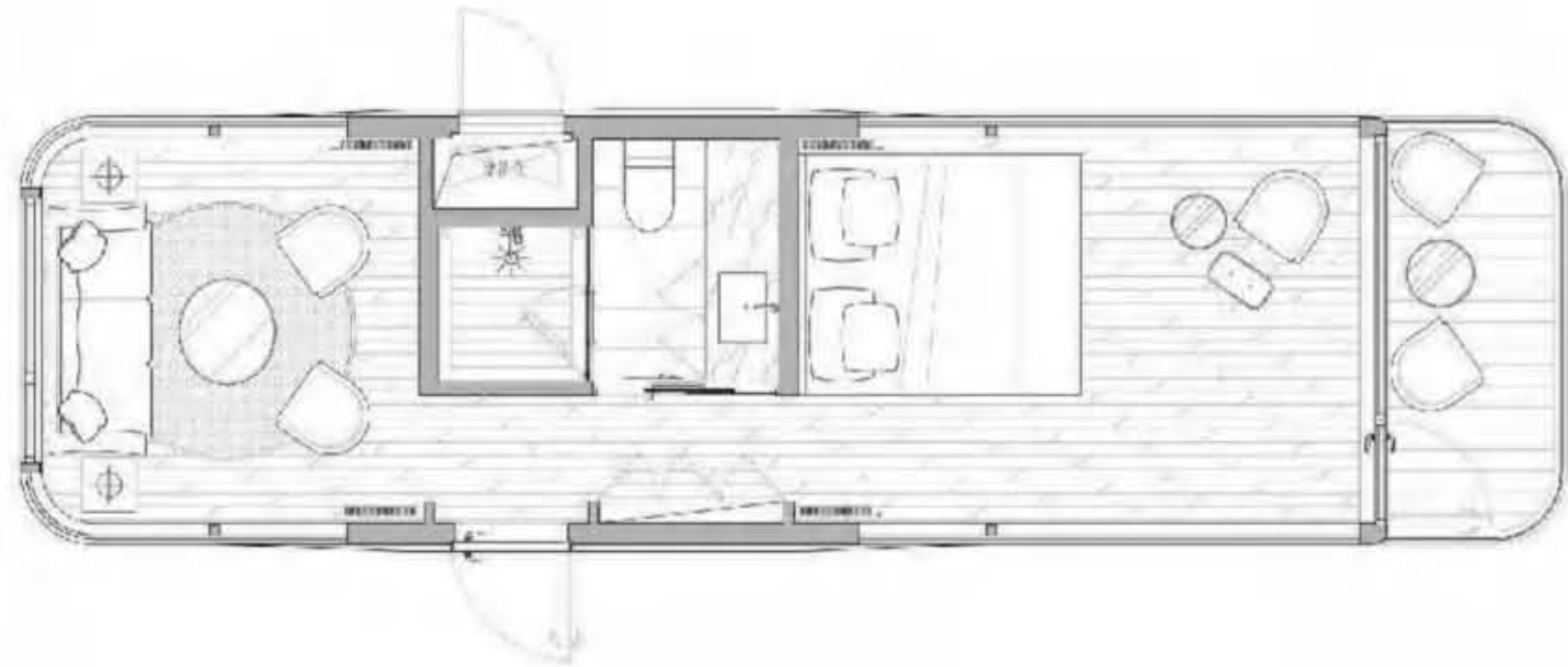


PMP POWERWORKS APS

Space Capsule House - E7



- Product number : Space Capsule House E7
- Dimensions : L11500 x W3300 x H3200 mm
- land area : 38 m²
- Maximum occupant : 4 people
- Power consumption : 10 KW
- Total net weight : 11 tons



PMP POWERWORKS APS

Space Capsule House - Apple Capsule



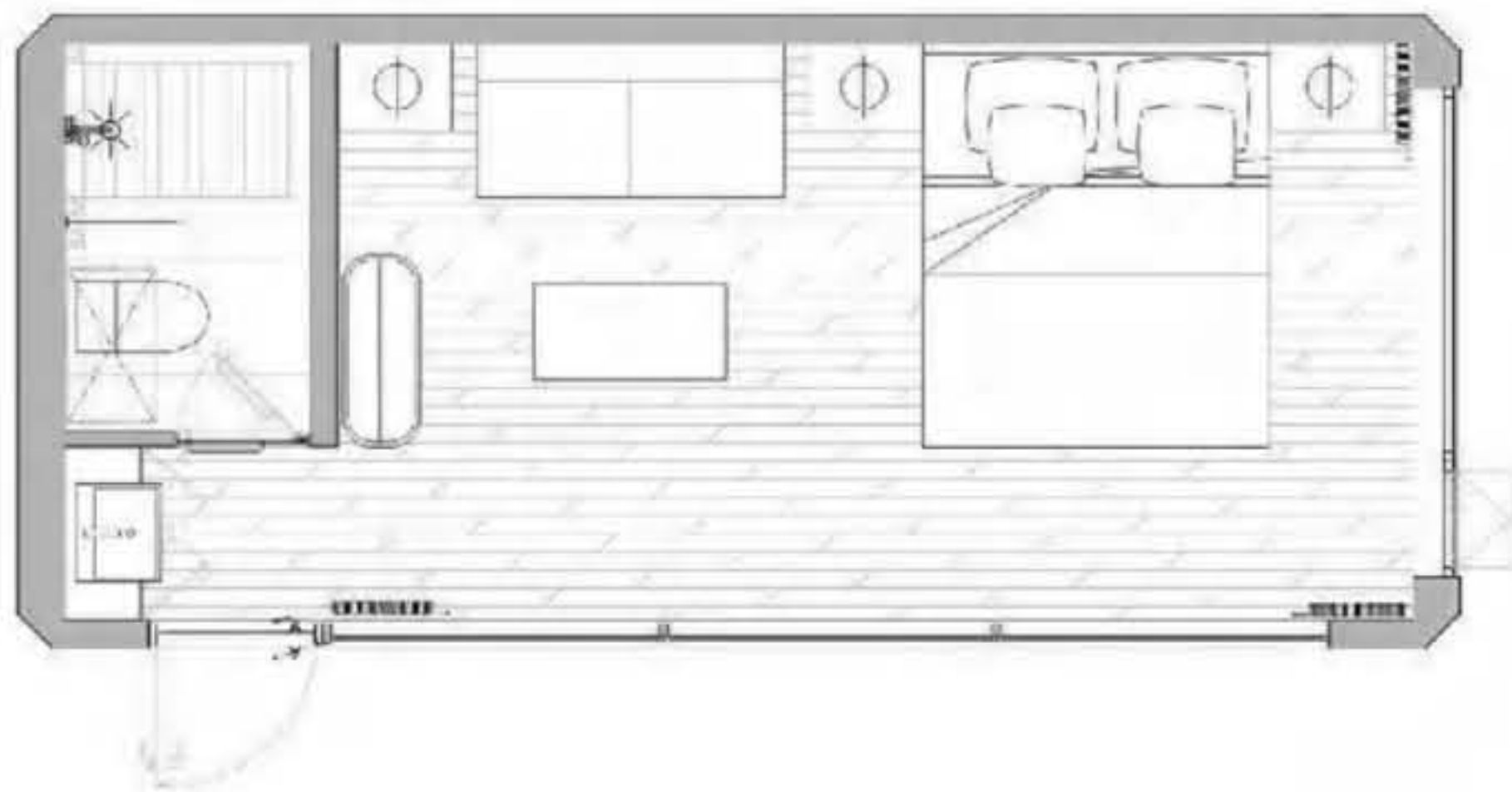
Product number : Space Capsule House Apple Capsule

Dimensions : L6000 x W6000 x H2900 mm

land area : 36 m²

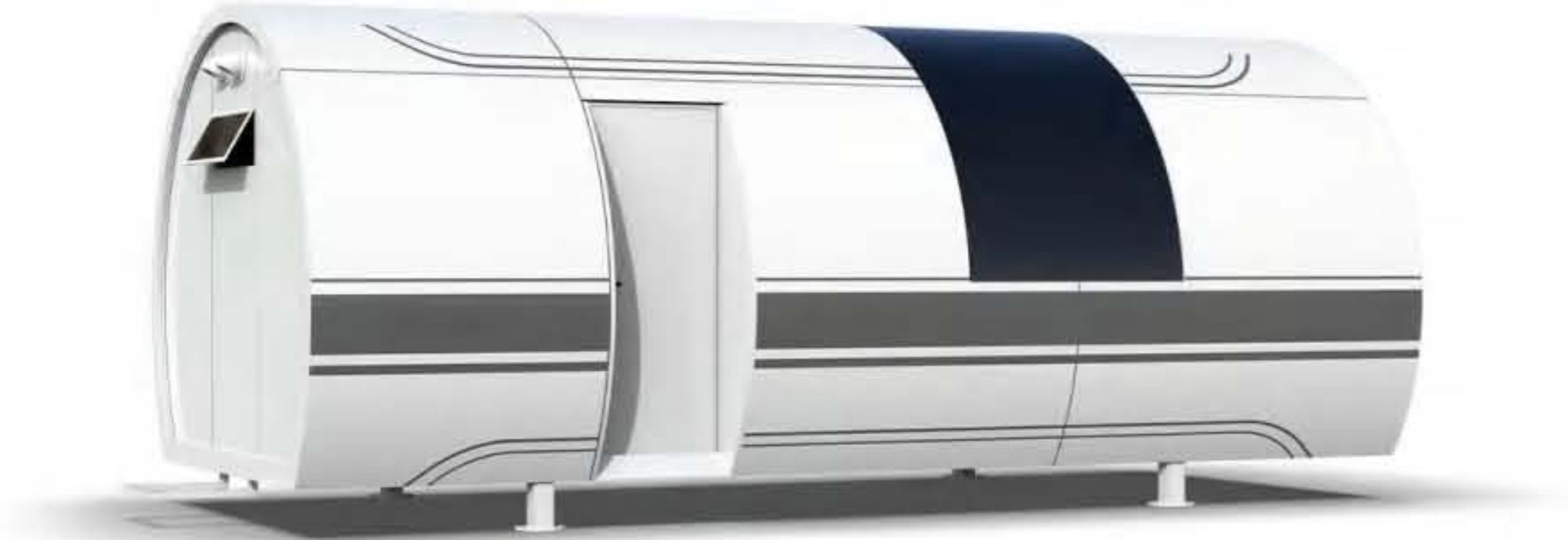
Size : Indoor 18 m² / Outdoor 18 m²

Power consumption : 6 KW

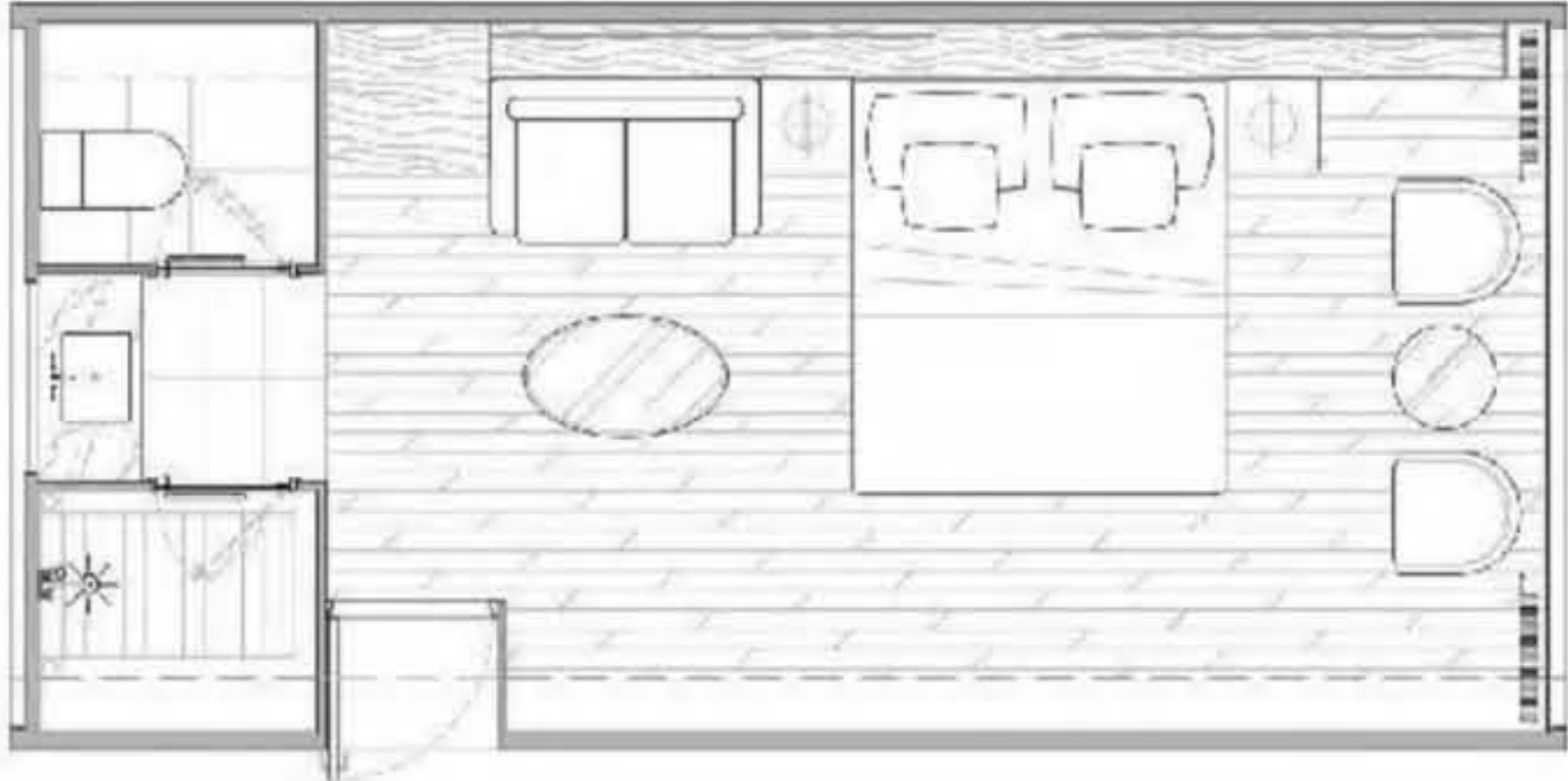


PMP POWERWORKS APS

Space Capsule House - O5

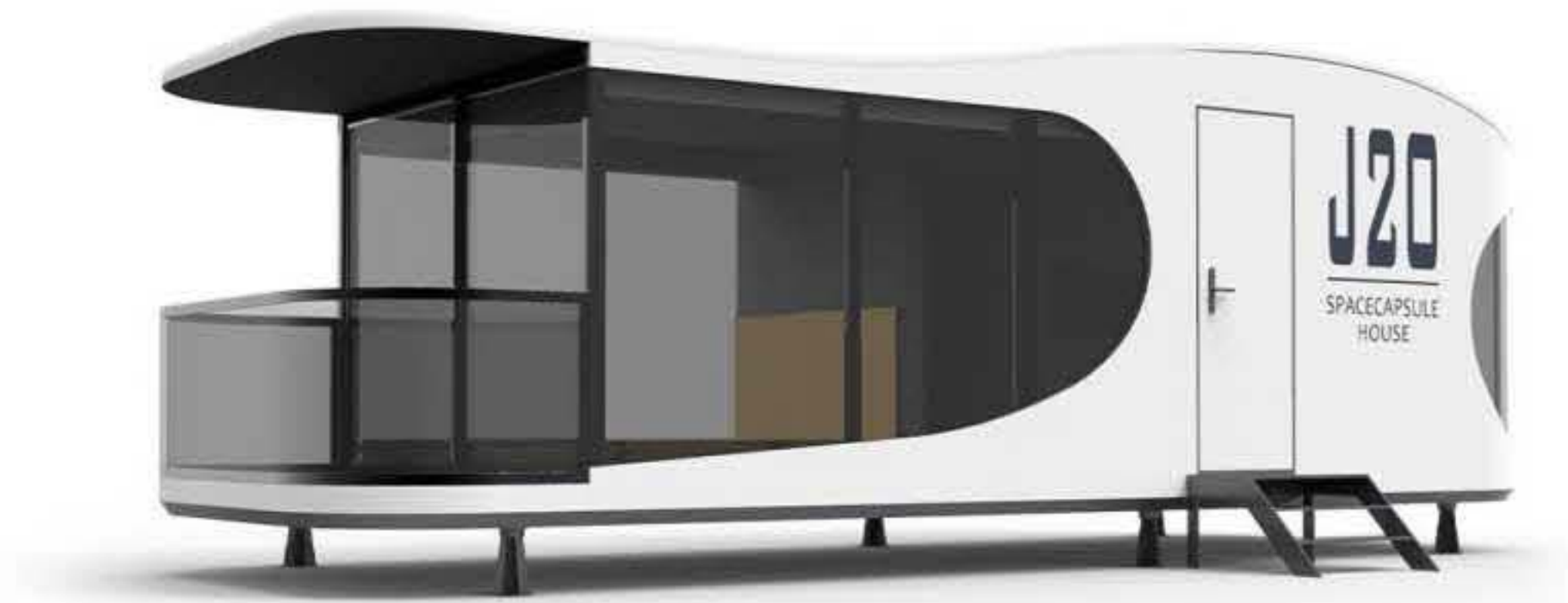


Product number : Space Capsule House O5
Dimensions : L7500 x W3300 x H3200 mm
land area : 27 m²



PMP POWERWORKS APS

Space Capsule House - J20



Product number : Space Capsule House J20

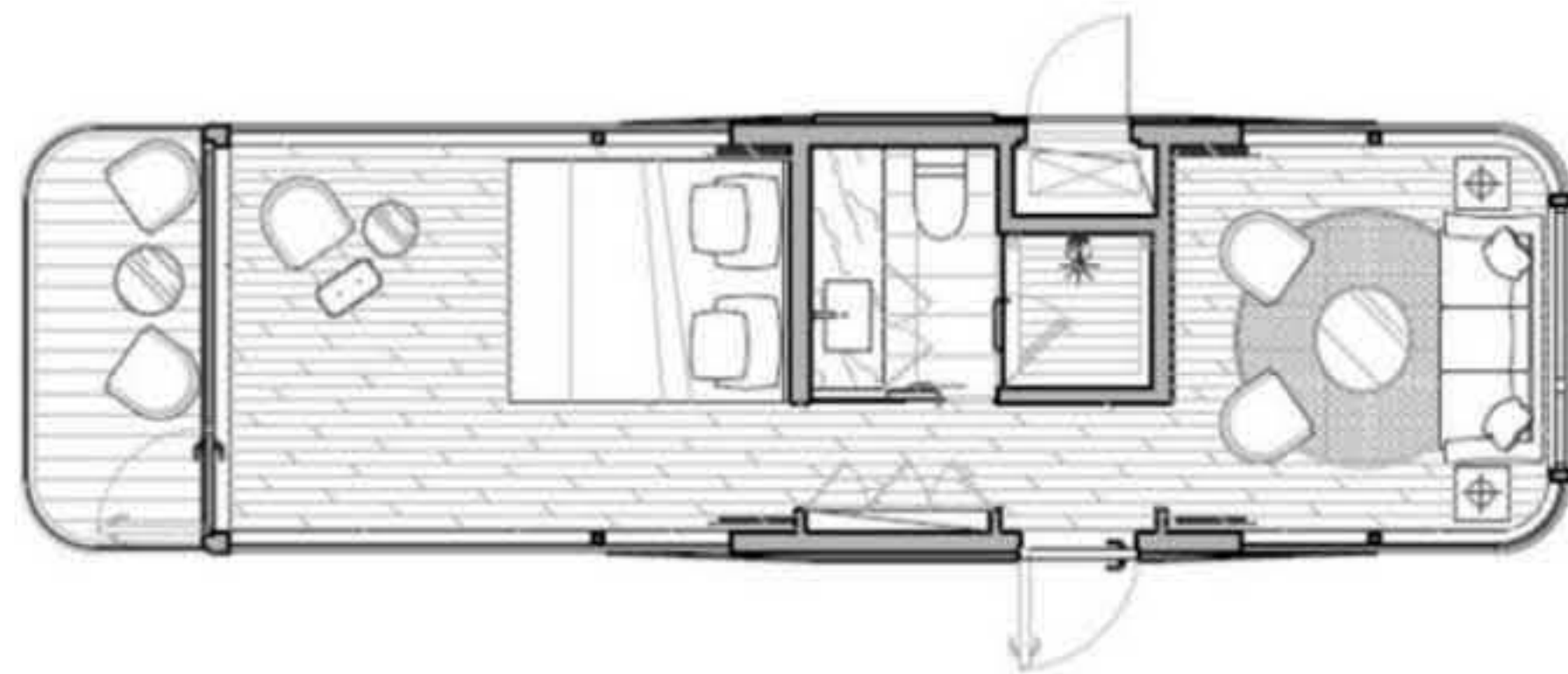
Dimensions : L8600 x W3200 x H3200 mm

land area : 27.5 m²

Maximum occupant : 2 people

Power consumption : 10 KW

Total net weight : 6 tons



PMP POWERWORKS APS

Space Capsule House - QQ



Product number : Space Capsule House QQ

Dimensions : L4000 x W2200 x H3200 mm





No restrictions, eco-friendly

Suitable for peaks, forests, tidal flats, etc. No construction waste, environmentally friendly.



Prefabricated, quick installed

60 days production, 2 hours installation On-site construction is not required.



Unique & attractive design

100% original design, leading the fashion trend Multiple media reports, popular in the market.



Panoramic view, back to nature

270° Floor-to-ceiling window, good insulation Sleep in the scenery, enjoy the beauty of nature.



Transportation

The product will be loaded on a delivery vehicle (standard semi-trailer, Length: 13.5m, Width: 3m, Height: <4.2m, arranged by our company) and shipped by a flat rack-container.

Hoisting

After arriving the project site, the product should be hoisted by the local crane service, and remote guidance will be provided by our technical team. The weight of the product is between 6 to 10 tons. It is recommended to arrange >25 tons for loading and unloading.

Installation

Before installation, the plumbing system and electrical system and foundation should be prepared in accordance with the standard drawings provided by our company. Place the product in the designated location under the guidance of our technicians, and test the performance after the installation is done.

PMP POWERWORKS APS

SMART HOUSE



Phone: +45 26 27 7726

Address: Åbakkevej 7B, 2690 Karlslunde, Denmark

www.pmp-projekt.dk

